

The Trephina

Double Storey



WATTLE CRT

THE TREPHINA

RESORT FACADE



THE TREPINA

HAMPTONS FACADE



THE TREPHINA

EXECUTIVE FACADE



THE TREPHINA

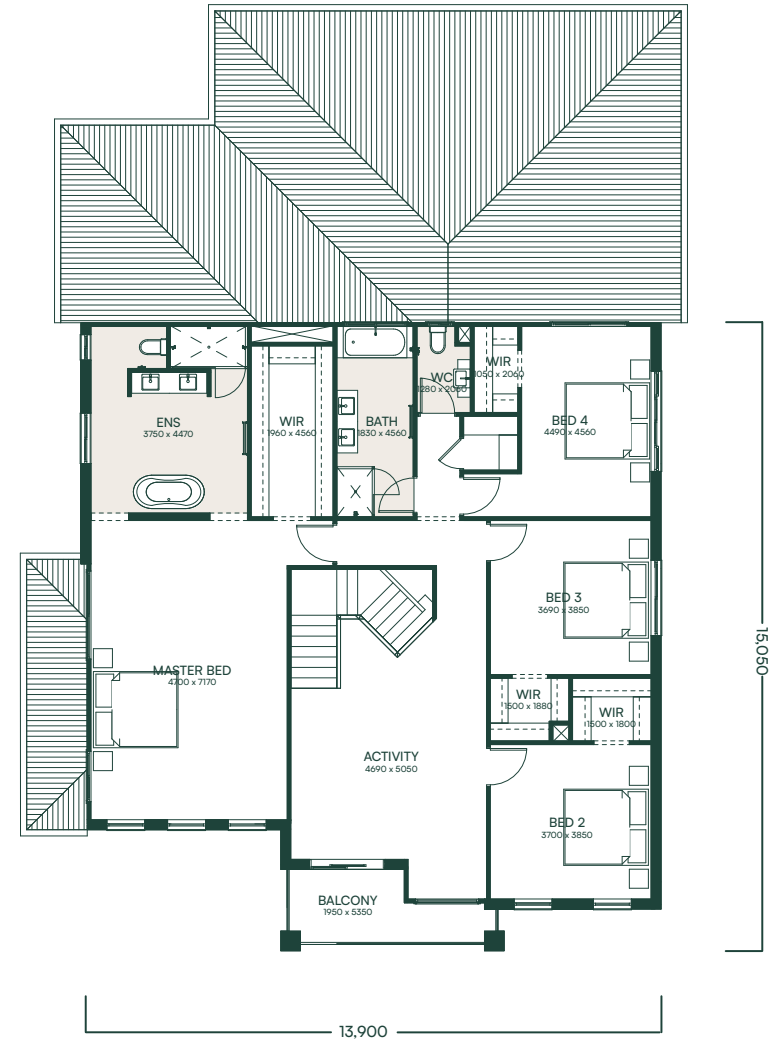
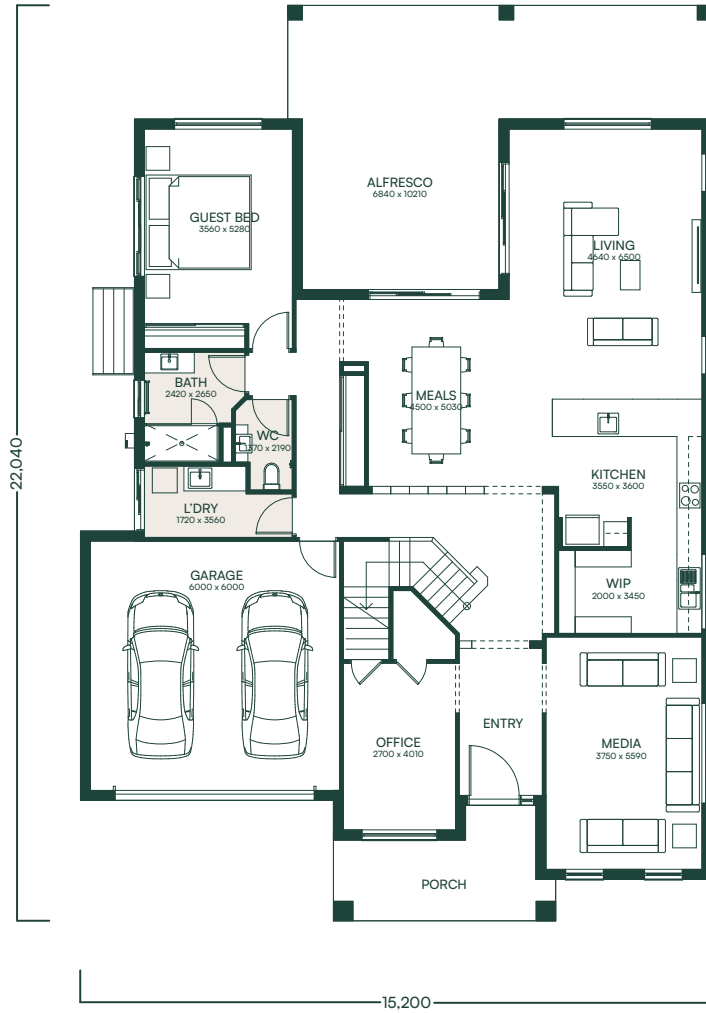
CLASSIC FACADE





The Trepina 477

 5  3.5
 2  3

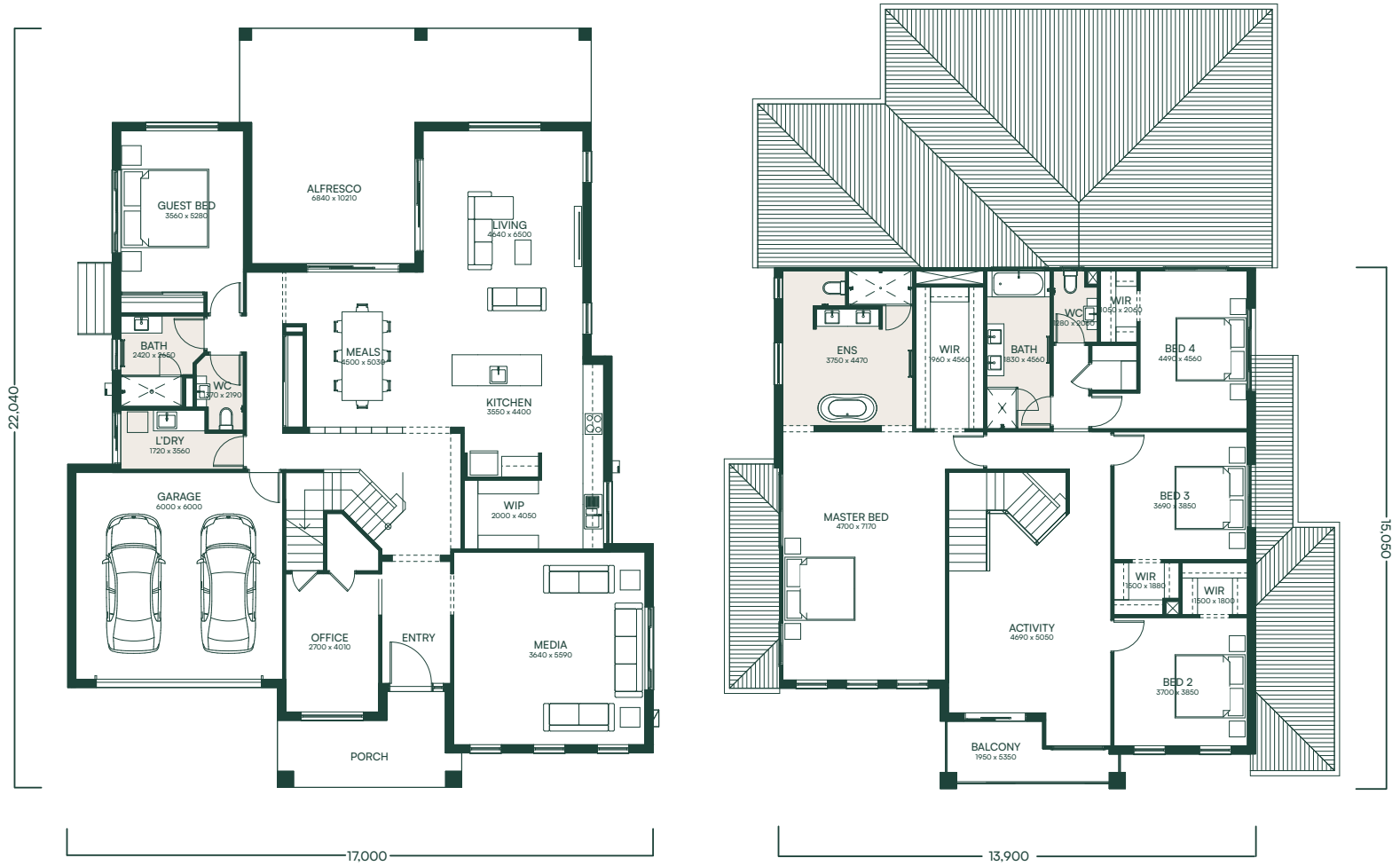
GF LIVING	UF LIVING
188.96 m ²	175.69 m ²
GARAGE	ALFRESCO
39.21 m ²	47.41 m ²
PORCH	BALCONY
11.4 m ²	7.54 m ²
VOID	TOTAL
6.45 m ²	476.66 m²



The Trepina 489

 5  3.5
 2  4

GF LIVING	UF LIVING
203.16 m ²	173.6 m ²
GARAGE	ALFRESCO
39.21 m ²	47.41 m ²
PORCH	BALCONY
11.4 m ²	7.52 m ²
VOID	TOTAL
6.45 m ²	488.75 m²



Homes built for life

WATTLE CRT

Images are representative only and may include features not supplied or installed by Wattle Court.
Speak to your local Wattle Court Consultant for pricing and available colour selections.